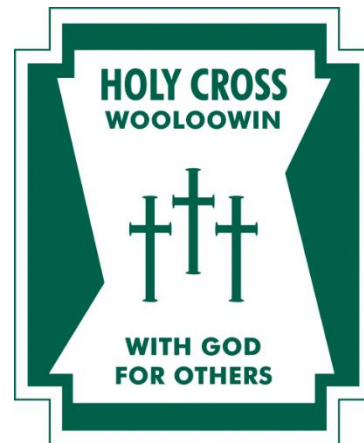


# Holy Cross Primary School Safeguarding Plan 2026



Version: V1

Last updated: March 2026

## Our Safeguarding Commitment

As an agency of the Archdiocese of Brisbane, we have a zero tolerance for all forms of abuse and are committed to safeguarding everyone involved in its activities, ministries, and services. The safety and wellbeing of children and adults-at-risk is paramount.

## Accessibility



Brisbane Catholic Education is committed to providing accessible services to people from all culturally and linguistically diverse backgrounds. If you have difficulty understanding this document, you can contact Translating and Interpreting Service National on 13 14 50 to arrange for an interpreter to translate it for you.

## Contact for enquiries

### Holy Cross Primary School

40 Morris St, Woolloowin,

Turrbal Country,

07 3857 2443

[www.hcpswoolloowin.qld.edu.au](http://www.hcpswoolloowin.qld.edu.au)

## Attributions

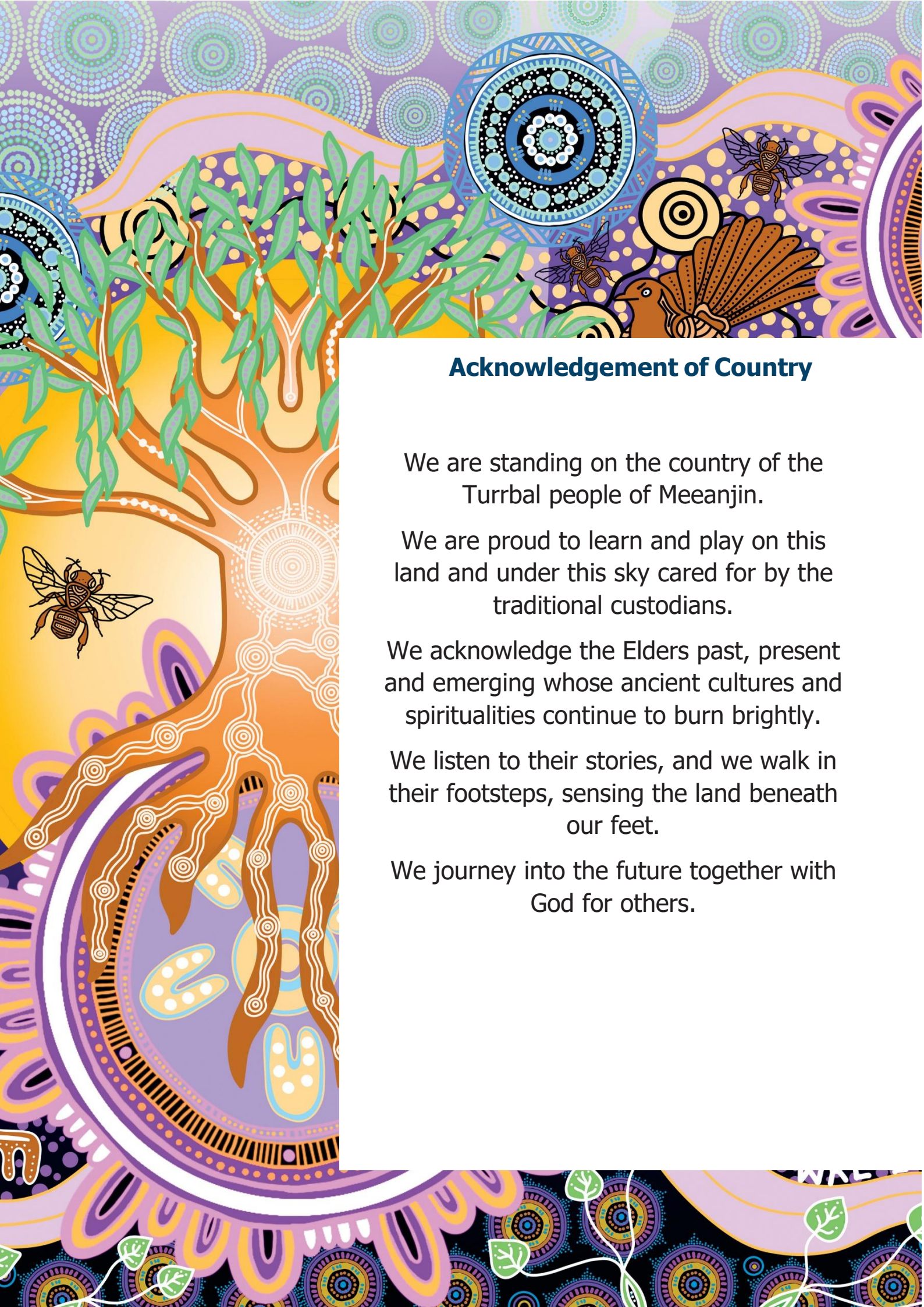
**Artwork:** Ngulli Gumera artwork by Waylene Currie of WRLC Arts, 2025.

**Cover:** © Brisbane Catholic Education, Holy Cross Primary School, 2023

**Page 4:** © Brisbane Catholic Education, Holy Cross Primary School, 2023

© The State of Queensland (Queensland Family and Child Commission) Guidelines for implementing the Universal Principle and Child Safe Standards in Queensland. These Guidelines and the related symbols contained in this work are adapted from material licensed under the Creative Commons Attribution (CC BY) 4.0 International licence.





## **Acknowledgement of Country**

We are standing on the country of the Turrbal people of Meeanjin.

We are proud to learn and play on this land and under this sky cared for by the traditional custodians.

We acknowledge the Elders past, present and emerging whose ancient cultures and spiritualities continue to burn brightly.

We listen to their stories, and we walk in their footsteps, sensing the land beneath our feet.

We journey into the future together with God for others.

# Introduction

**Because wherever a child or vulnerable person is safe, there you serve and honour Christ.**

Pope Francis written address to the Pontifical Commission for the Protection of Minors' plenary assembly in Rome March 24-28, 2025.



Holy Cross School, Woolloowin, is committed to creating environments where children and young people feel protected, valued, and heard. Safeguarding is a shared responsibility, and every child has the right to grow and thrive free from harm.

We are guided by our Christian Catholic Tradition and the teachings of Jesus Christ who advocated for the protection of children and the marginalised. Our mission to teach, challenge and transform through our educational endeavours is actioned by Catholic Social Teaching, as part of the Archdiocese of Brisbane.

The Queensland Government recently introduced new Child Safe Standards. These Standards clearly outline what child safe organisations must do to create environments where children are protected, respected and able to speak up. They focus on building safe, welcoming cultures, hearing and valuing children's voices, working closely with families, celebrating diversity, making sure the right people work with children, responding quickly to concerns, and always looking for ways to improve safety.

Throughout 2026, our school will review its compliance against the new Child Safe Standards using a phased approach in line with Queensland Family and Child Commission guidelines. We will review, self-assess and report against selected Standards each term, building towards full implementation and continuous improvement across all Standards by the end of the year. This staged process allows Holy Cross School to embed the Standards meaningfully and ensure our practices reflect the needs, voices and safety of our students.

As a Catholic school within the Archdiocese of Brisbane, we honour the Archdiocesan Safeguarding Commitment and uphold the values of Catholic education in our safeguarding practices.

This School Safeguarding Plan is developed in consultation with students, families, and employees, and is contextualised to our local school environment. It reflects our commitment to continuous improvement, cultural safety, and child-centred practice, and is supported by both Brisbane Catholic Education policies and procedures and school-specific safeguarding actions. Further Information about BCE wide practices can be accessed [here](#).

For more information or to request accessible formats, please contact the school Principal.

**The Archdiocese has zero tolerance for all forms of abuse and is committed to safeguarding everyone involved in its activities, ministries, and services. The safety and wellbeing of children and adults-at-risk is paramount.**

# The Child Safe Standards



## Standard 1: Leadership and Culture

Child safety and wellbeing is embedded in the entity's organisational leadership, governance, and culture.



## Standard 2: Voice of children

Children are informed about their rights, participate in decisions affecting them and are taken seriously.



## Standard 3: Family and community

Families and communities are informed and involved in promoting child safety and wellbeing.



## Standard 4: Equity and diversity

Equity is upheld and diverse needs respected in policy and practice.



## Standard 5: People

People working with children are suitable and supported to reflect child safety and wellbeing values in practice.



## Standard 6: Complaints management

Processes to respond to complaints and concerns are child-focused.



## Standard 7: Knowledge and skills

Staff and volunteers of the entity are equipped with the knowledge, skills, and awareness to keep children safe through ongoing education and training.



## Standard 8: Physical and online environments

Physical and online environments promote safety and wellbeing and minimise the opportunity for children to be harmed.



## Standard 9: Continuous improvement

Implementation of the Child Safe Standards is regularly reviewed and improved.



## Standard 10: Policies and procedures

Policies and procedures document how the entity is safe for children.



## Universal Principle

Requires child safe entities to provide an environment that promotes and upholds the right to cultural safety.

## Safeguarding Focus Areas

The 10 standards are grouped under four key focus areas:



# The Universal Principle



Ensuring cultural safety through the Universal Principle is essential for Aboriginal and Torres Strait Islander students and families.

While the Principle intentionally focuses on First Nations children, the cultural safety indicators which make up the Principle are designed to adopt a proactive and comprehensive approach to safeguarding, ensuring that policies, and practices are inclusive for all children, particularly those who may be marginalised or vulnerable. The Universal Principle is embedded within all 10 Standards.

## Cultural Safety Indicators

- 1 Transformational unlearning** – Organisations must challenge unconscious bias, racism, and discrimination within their structures and workforce.
- 2 Negotiating values, motivations, and paradigm** – Policies and programs should be co-designed with Aboriginal and Torres Strait Islander communities to reflect their perspectives on child safety.
- 3 Prioritising social and emotional wellbeing and health** – A holistic, strengths-based approach must be adopted to support the wellbeing of Aboriginal and Torres Strait Islander children, staff, and families.
- 4 Sharing power and decision-making** – Decision-making processes should be led or co-led by Aboriginal and Torres Strait Islander peoples to ensure genuine partnerships.
- 5 Sharing resources** – Organisations should dedicate resources to Aboriginal and Torres Strait Islander led initiatives, research, and governance mechanisms, where appropriate.
- 6 Creating a strategic enabling environment** – Leadership must set clear priorities and accountability structures ensure cultural safety into daily operations.
- 7 Operating on Aboriginal and Torres Strait Islander terms of reference** – Service delivery to Aboriginal and Torres Strait Islander children should be grounded in Aboriginal and Torres Strait Islander knowledge systems and self-determination principles.
- 8 Accountability and continuous quality improvement** – Progress should be measured using Aboriginal and Torres Strait Islander-defined success indicators, ensuring sustained improvement.

## The Cultural Capability Framework

This framework enables Brisbane Catholic Education to develop a workforce grounded in Aboriginal and Torres Strait Islander cultural humility, enabling responsive and innovative practices that contribute to Reconciliation. The Cultural Capability Framework and Molum Sabe assists our workforce to critically reflect on individual and organisational practices and develop effective practices across four cultural standards:



### Teaching

Culturally responsive teachers and education professionals create the conditions for respectful relationships with Aboriginal and Torres Strait Islander peoples, and learning of knowledges, identities, cultures and languages.



### Relationships

We develop relationships and connections with Aboriginal and Torres Strait Islander employees, students, families and communities to build and sustain inclusive and culturally safe practices and environments.



### Environment

We establish an inclusive and culturally safe environment, where Aboriginal and Torres Strait Islander employees, students, families and communities feel a sense of belonging and connection.



### Leadership

All employees are accountable for building and sustaining inclusive and culturally safe practices and environments with Aboriginal and Torres Strait Islander employees, students, families, and communities. Leaders have additional responsibilities to articulate a clear vision and provide ongoing cultural capability development opportunities for employees.

# Standard 1: Leadership and Culture

Child safety and wellbeing is embedded in the entity's organisational leadership, governance, and culture<sup>1</sup>



## Brisbane Catholic Education's commitment to Standard 1

At BCE, student safety is central to how we plan, think and act, shaping a safeguarding culture that protects their safety and wellbeing. We use a whole of organisation approach; led by strong leadership, embedded in practice and supported through shared responsibility. Clear policies, codes of conduct, Student Protection Processes and risk management plans set behavioural expectations and guide how we keep children safe. Our Safeguarding Policy aligns with the Archdiocese of Brisbane Safeguarding Framework and is available on our website. Leaders are accountable for ensuring these requirements are followed and continually improved. Safeguarding is a system critical foundation of the BCE Strategic Plan 2025–2027 and an identified enterprise risk, monitored through regular monitoring, internal audits and escalation pathways. Governance transparency is reinforced through quarterly reporting to the BCE Executive Team, Safeguarding Committee and Catholic Education Council, including assessments of practice effectiveness and improvement progress. We take a strong stand against discrimination, bias or harm toward any child and are committed to cultural safety for Aboriginal and Torres Strait Islander peoples.

## What Standard 1 looks like at our school:

At Holy Cross School, we are committed to prioritising the safety and wellbeing of every student. At the beginning of each school term, class teachers intentionally revisit and explicitly teach the Student Protection Safety Poster with their classes. This ensures consistent reinforcement of the Recognise, React and Report framework, supporting students to clearly understand how to identify concerns, seek help, and report worries in a timely and appropriate way. As part of this learning, students are supported to identify their personal safety network, which includes trusted adults both within the school and at home. This strengthens students' help-seeking behaviours and reinforces shared responsibility for their safety and wellbeing.

Clear, accessible decision-making flowcharts related to student protection and safeguarding are prominently displayed throughout the school. These resources are located in key staff areas, including the staffroom, photocopy room, and main office, and are embedded within the Staff Handbook and staff induction materials. This ensures all staff, including new and relief staff, have consistent guidance and are supported to respond confidently and appropriately to safeguarding concerns in line with legislative and system requirements.

The school maintains proactive and transparent communication with families regarding expectations for behaviour and safety, including Codes of Conduct for camps and excursions. Information is provided to families prior to each event and is explicitly unpacked with students by teachers. Families are encouraged to reinforce these expectations at home, promoting shared understanding and safe, respectful behaviours across school and family contexts.

Student wellbeing and safety are further prioritised through regular whole-school communication. Each week, the Principal communicates the focus of the Get GRIT Social and Emotional Learning program through Week at a Glance and staff briefings, supported by family-friendly resources and daily assembly messages. Structured parent education, including student protection training at the Term 1 Parent Information Night, further strengthens partnerships and fosters a strong, transparent culture of child safety within the Holy Cross School community.

Holy Cross School has a Reconciliation Action Plan Committee which works to enact our school plan. We publicly display the Aboriginal and Torres Strait Island flags and artwork and utilise the community developed Acknowledgement of Country.

<sup>1</sup> Alignment with National Catholic Safeguarding Standard (NCSS): Standard 1: Committed Leadership Governance and Culture | Working with Children (Risk Management and Screening) Regulation 2020 (Qld), Schedule 1, Section 2(1), (2)(a) and (2)(b) | Education (Accreditation of Non-State Schools) Regulation 2017 (Qld) s 6 (1), (2) and s9 (e)

# Standard 2: Voice of children

Children are informed about their rights, participate in decisions affecting them and are taken seriously<sup>2</sup>



## Brisbane Catholic Education's commitment to Standard 2

We strive to create a culture where every child feels safe, heard and confident to share their ideas or concerns. Our employees and volunteers are supported to engage respectfully with students, listen carefully, and respond to their immediate needs. BCE's school safeguarding storybooks and animation series help explain our policies, processes and key safeguarding concepts to students in age appropriate ways. We also support schools to deliver Consent and Respectful Relationships Education so students understand their rights, identify trusted adults, and build positive, healthy and respectful relationships. Each year, students across all BCE schools are invited to share their views through the *Tell Them From Me* survey. This feedback helps us understand how students are feeling, their concerns and how we can strengthen safety and support in our schools. Our Student Voice Program gives students a platform to contribute to BCE wide decisions affecting their safety, wellbeing and learning. Our Archdiocesan First Nations Student Representative Council and our Aboriginal and Torres Strait Islander Education Team help co-design culturally safe policies and practices.

## What Standard 2 looks like at our school:

In line with our implementation plan, at the end of Term 2 we will explain:

- How students learn about rights, safety and who to trust
- How the school gathers and responds to student voice
- How student participation influences decision-making
- How cultural safety shapes our approach
- Evidence of practice and planned improvement

<sup>2</sup> Alignment with National Catholic Safeguarding Standards: Standard 2 Children and Adults Are Safe, Informed and Participate | Working with Children (Risk Management and Screening) Regulation 2020 (Qld) sch 1 s 2(8) (a) (ii) | Education (Accreditation of Non-state schools) Regulation (Qld) 2017 s 16(4) (a)-(b)

# Standard 3: Family and community

Families and communities are informed and involved in promoting child safety and wellbeing<sup>3</sup>



## Brisbane Catholic Education's commitment to Standard 3

Student safety, wellbeing and learning are best supported when families and schools work together and share responsibility for protecting students. At BCE, we believe informed and engaged families and communities are essential to creating safe learning environments. We support schools to partner with families in ways that are consistent, respectful, culturally safe and shaped by local needs. We also make sure families and community members have clear, accessible information about our safeguarding approach and how to raise concerns. Each year, parents and caregivers share their perspectives through the *Tell Them From Me* Parent Survey. This feedback helps BCE understand family experiences and concerns, guiding improvements that make our schools safer and more supportive for students.

## What Standard 3 looks like at our school:

In line with our implementation plan, at the end of Term 2 we will explain:

- How our school communicates safeguarding expectations to families
- How families and communities participate in safety and wellbeing initiatives
- How the school engages P&F and community partners
- How feedback is gathered and acted on
- Evidence of practice and planned improvements

<sup>3</sup> Alignment with National Catholic Safeguarding Standards: Standard 3 Partnering With Families Carers And Communities | Working with Children (Risk Management and Screening) Regulation 2020 (Qld) sch 1 s 2(8) (a) (ii) | Education (Accreditation of Non-state schools) Regulation (Qld) 2017 s 16(4) (a)–(b)

# Standard 4: Equity and diversity

Equity is upheld and diverse needs respected in policy and practice<sup>4</sup>



## Brisbane Catholic Education's commitment to Standard 4

Every student deserves to flourish and has the right to learn in a safe, supportive and inclusive environment, free from discrimination, bullying and harassment. BCE supports all students, regardless of background, identity or ability, to access and fully participate in their learning. We embed equity at the heart of our culture through the Student Diversity and Inclusion Policy, the Student Wellbeing Policy and the Queensland Catholic Education Council's Inclusive Practice in Catholic Schools. We expect school practices to reflect each child's circumstances and needs, and to prioritise culturally safe, trauma informed approaches in planning, communication and engagement. The Engage Student Support System and the Multi Tiered System of Supports (MTSS) help schools provide a student centred, comprehensive continuum of support. These systems enable collaborative, targeted and personalised assistance for diverse learners. We also provide children with opportunities to learn about different cultures, people and communities through the Aboriginal and Torres Strait Islander Histories and Cultures Cross Curriculum Priority and the Australian Curriculum.

## What Standard 4 looks like at our school:

In line with our implementation plan, at the end of At the end of Term 2 we will explain:

- How the school promotes equity, inclusion and respect for diversity
- How supports and adjustments are provided for diverse learners
- How cultural safety and anti-discrimination practices are embedded
- How students access safeguarding information suitable for them
- Evidence of practice and planned improvements

<sup>4</sup> Alignment with National Catholic Safeguarding Standards: Standard 4 Equity Is Promoted And Diversity Is Respected | Working with Children (Risk Management and Screening) Regulation 2020 (Qld) sch 1 s 2(3) (a) (ii) | Education (Accreditation of Non-State Schools) Regulation 2017 (Qld) s 11, s 15 (a)

# Standard 5: People

People working with children are suitable and supported to reflect child safety and wellbeing values in practice<sup>5</sup>



## Brisbane Catholic Education's commitment to Standard 5

BCE supports schools to ensure that everyone working or volunteering with students is suitable, safe and capable of upholding child safety and wellbeing. Our recruitment and screening processes embed safeguarding at every stage, from role design and advertising through to interviews, reference checks, onboarding and performance development. The Employee and Volunteer Screening Procedure includes a role risk matrix, Blue Card screening requirements and clearly defined responsibilities. These help leaders identify potential risks to student safety and wellbeing and respond appropriately. BCE's Human Resource Information System, Ignite, operationalises these procedures and helps employees monitor and maintain their safeguarding screening requirements. Our Procurement Procedure requires all external providers engaging with BCE offices or schools to be child safe and compliant with relevant legislation. The Risk Management Framework guides how we monitor safeguarding practices in schools through established quality control mechanisms. These processes ensure schools can safely engage employees, volunteers and third parties, with appropriate oversight, training and supervision in place before any child related work occurs.

## What Standard 5 looks like at our school:

In line with our implementation plan, at the end of Term 4 we will explain:

- How we screen and onboard employees, volunteers and third parties
- How we ensure safe supervision and conduct
- How we apply BCE recruitment and HR procedures for employees and volunteers
- How we track and keep safeguarding screening requirements current
- Evidence of practice and planned improvements

<sup>5</sup> Alignment with National Catholic Safeguarding Standards: Standard 5 Robust Human Resource Management | Working with Children (Risk Management and Screening) Regulation 2020 (Qld) sch 1 s 2(8)(b) | Education (Accreditation of Non-State Schools) Regulation 2017 (Qld) s 15 (b)

# Standard 6: Complaints management

Processes to respond to complaints and concerns are child focused<sup>6</sup>



## Brisbane Catholic Education's commitment to Standard 6

BCE fosters a culture where concerns about safety and wellbeing can be raised openly, respectfully and without fear. We support child focused complaint pathways that are accessible to students, families, employees and community members. Our policies and procedures outline reporting requirements, cooperation with authorities, and expectations for timely and safe responses to concerns. From 1 July 2026, BCE will implement Queensland's Reportable Conduct Scheme. This means BCE will report any reportable allegation or conviction, conduct investigations, provide interim and final reports to the Queensland Family and Child Commission, and immediately notify police of any suspected criminal conduct within required timeframes. BCE provides guidance and training to ensure complaints are handled in trauma informed and culturally safe ways, supported by Aboriginal and Torres Strait Islander Participation Officers and expertise from safeguarding, student protection, legal, wellbeing, school operations and program teams, and employee relations and investigations teams. System wide improvements are strengthening complaint handling processes, creating clearer pathways and embedding safeguarding expertise across the framework. These structures help schools respond to concerns with transparency, sensitivity and procedural fairness.

## What Standard 6 looks like at our school:

In line with our implementation plan, at the end of Term 3 we will explain:

- How students and families can raise concerns
- How the school ensures child-focused, trauma-informed responses
- How complaints are recorded, managed and escalated and resolved
- How the school implements the Reportable Conduct Scheme
- Evidence of practice and planned improvements

<sup>6</sup> Alignment with National Catholic Safeguarding Standards: Standard 6 Effective Complaints Management | Working with Children (Risk Management and Screening) Regulation 2020 (Qld) sch 1 s 2 (4) (b) | Education (Accreditation of Non-State Schools) Regulation 2017 (Qld) s7 | Child Safe Organisations Act (Qld) Chapter 3

# Standard 7: Knowledge and skills

Staff and volunteers of the entity are equipped with the knowledge, skills, and awareness to keep children safe through ongoing education and training<sup>7</sup>



## Brisbane Catholic Education's commitment to Standard 7

BCE builds a confident, capable and culturally aware workforce committed to children's safety and wellbeing. Our Mandatory Safeguarding Training Framework sets clear onboarding and refresher requirements for all employees. Every year, BCE employees complete online student protection training covering indicators of child harm, grooming behaviours, how to respond to disclosures and mandatory reporting requirements. School staff also participate in additional face to face training each term on topics related to student safety and wellbeing. Staff who serve as Student Protection Contacts (SPCs) receive advanced training in managing disclosures and supporting colleagues to keep students safe. Volunteers and third party providers complete mandatory safeguarding onboarding before commencing any child related work, along with annual refreshers recorded in school registers in line with the Volunteer Policy and Procedure and Third Party Safeguarding Guidelines. BCE has developed a Cultural Learning Plan and Cultural Capability Framework to strengthen cultural competency and responsiveness, promote cultural safety and BCE's Ngutana-Lui Centre provides curriculum-aligned cultural learning for students and staff. All employee training is tracked through BCE's Learning Management System (iLearn), which issues automated reminders and provides compliance reports to managers.

## What Standard 7 looks like at our school:

In line with our implementation plan, at the end of Term 4 we will explain:

- How employees, volunteers and third parties complete required safeguarding training
- How the school reinforces safeguarding practice throughout the year
- How cultural capability is embedded in training
- How the school monitors and supports employees and volunteers to undertake mandatory training
- Evidence of practice and planned improvements

<sup>7</sup> Alignment with National Catholic Safeguarding Standards: Standard 7 Ongoing Education and Training | Working with Children (Risk Management and Screening) Regulation 2020 (Qld) sch 1 s 2(8)(b) | Education (Accreditation of Non-State Schools) Regulation 2017 (Qld) s16, 4 (c)

# Standard 8: Physical and online environments

Physical and online environments promote safety and wellbeing and minimise the opportunity for children to be harmed<sup>8</sup>



## Brisbane Catholic Education's commitment to Standard 8

BCE is committed to creating healthy, safe and productive physical and online environments that support student wellbeing, prevent harm and safeguard everyone involved in our activities. We take a holistic, strengths-based approach that recognises all dimensions of a child's wellbeing – physical, social, spiritual, emotional and cultural. Building plans are reviewed with a focus on environmental risks that may affect children's safety. The BCE Health, Safety and Wellbeing (HSW) Policy and BCE Safeguarding Guidelines for School Design provide practical guidance to build safe, inclusive spaces with strong visibility, supervision and access control. To support online safety, BCE aligns with the eSafety Commissioner's Best Practice Framework and delivers the Australian Curriculum for Online Safety (P–10). The Acceptable Use of Devices and Digital Resources agreement promotes safe digital behaviour and is supported by content filters and monitoring tools. Policies such as the Employee Code of Conduct, IT Acceptable Use Policy and Privacy Policy outline expectations for safe online behaviour. BCE provides guidance to help schools maintain safe digital environments, and student safety considerations are embedded in risk assessments, school risk registers and organisation wide risk management processes.

## What Standard 8 looks like at our school:

In line with our implementation plan, at the end of Term 3 we will explain:

- How physical spaces are designed and supervised for safety
- How the school promotes online safety for students
- How employees' model safe digital behaviours
- How both physical or online environmental risks are assessed and managed
- Evidence of practice and planned improvements

<sup>8</sup> Alignment with National Catholic Safeguarding Standards: Standard 8 Safe Physical And Online Environments | Working with Children (Risk Management and Screening) Regulation 2020 (Qld) | Education (Accreditation of Non-State Schools) Regulation 2017 (Qld) s 18 (1) s19

# Standard 9: Continuous improvement

Implementation of the Child Safe Standards is regularly reviewed and improved<sup>9</sup>



## Brisbane Catholic Education's commitment to Standard 9

BCE is committed to continual review, learning and strengthening of safeguarding practice across both system and school levels. Ongoing improvement ensures our policies, frameworks and practices evolve in response to emerging issues, data and feedback, and remain effective in preventing harm and promoting wellbeing. System wide reviews are carried out by the Assurance Team, Risk and Compliance Team and through school accreditation processes. These reviews assess the effectiveness of safeguarding measures and identify opportunities to strengthen practice. Critical incidents also trigger structured post incident reviews to identify risks, evaluate responses and enhance wellbeing supports for students and employees. Governance committees, including Safeguarding, Risk and Assurance, and People and Safety, monitor trends and support system wide improvements. Schools are supported to monitor their own safeguarding indicators, such as Blue Card compliance, attendance, bullying and wellbeing data, enabling a local cycle of review, reflection and continuous improvement.

## What Standard 9 looks like at our school:

Holy Cross School uses collaborative and reflective processes to monitor the effectiveness of its safeguarding practices and to drive continuous improvement. The Student Protection Contact (SPC) team works together to ensure staff, students, and families are aware of SPC contacts and understand how to raise safety concerns. At the beginning of each term, teachers revisit classroom Safety posters to reinforce student understanding of protective behaviours and to ensure all students can confidently identify trusted adults they can approach if they feel unsafe.

Staff knowledge and confidence are strengthened through ongoing professional learning. Each term, the Principal leads safeguarding workshops that include scenario-based discussions, enabling staff to reflect on practice, clarify responsibilities, and build consistency in responding to student safety and wellbeing concerns.

When student protection matters arise, SPC members consult with one another to ensure appropriate oversight, shared decision-making, and identification of key or recurring issues. Records are securely maintained through the Engage platform or Guidance Counsellor case files, supporting effective monitoring, documentation, and review of safeguarding responses.

As part of the ongoing implementation of the Child Safe Standards, the Leadership Team, in consultation with SPCs, regularly reviews school practices to identify areas for improvement and to inform future actions. Continuous improvement is further supported through the Reconciliation Action Plan (RAP) Committee, which meets once per term to review progress, monitor actions, and provide culturally informed guidance. This committee plays an important role in strengthening cultural safety and advancing understanding of Aboriginal and Torres Strait Islander perspectives within the school community.

At least 3-4 times per week the Principal leads short session connected to our work in the Get GRIT Social / Emotional Wellbeing program. These sessions will focus on what is being taught that week in the Get GRIT lesson which promotes Getting Along, Resilience, Identify Emotions and Taking Charge. The principal also shares with parents each week via the Week at a Glance communication and school Facebook the Get GRIT focus for the week so that families can reinforce the same message at home.

This program began in Semester 2, 2025 and the Leadership Team plans to monitor the TTFM wellbeing and safety data in the 2026 survey to see the impact of this program for students.

The Leadership identifies that it would like more opportunity for student voice around matters of Safety and Wellbeing. As the 10 Child Safe standards are reviewed opportunities for further student voice will be explored and identified.

<sup>9</sup> Alignment with National Catholic Safeguarding Standards: Standard 9 Continuous Improvement | Working with Children (Risk Management and Screening) Regulation 2020 (Qld) sch 1 s 2(6)(a) | Education (Accreditation of Non-State Schools) Regulation 2017 (Qld) s20

# Standard 10: Policy and procedures

Policies and procedures document how the entity is safe for children<sup>10</sup>



## Brisbane Catholic Education's commitment to Standard 10

The Archdiocese of Brisbane Safeguarding Framework guides safeguarding practice across all Catholic entities, including BCE. The BCE Safeguarding Policy sits within this framework and is supported by a range of policies, procedures and guidelines designed to protect student safety and wellbeing. Under the BCE Policy Governance Framework, all policies are reviewed at least every three years through consultation, governance checks and formal approval. This ensures they remain current, reflect best practice and continue to support student safety, wellbeing and cultural safety. Consultation ensures policies reflect lived experience and meet the diverse needs of school communities. BCE is also working to make policies easier to understand and use, including creating child friendly resources. Policies and procedures are accessible to students, families, volunteers and third parties through BCE and school websites, and are available internally to employees through Spire. Safeguarding responsibilities are embedded in the BCE Leadership Capability Framework, ensuring leaders consistently communicate, model and apply policy requirements.

## What Standard 10 looks like at our school:

Holy Cross School implements safeguarding policies and procedures that are primarily developed and endorsed by Brisbane Catholic Education, ensuring alignment with system-wide expectations and legislative requirements. These policies are complemented by locally developed procedures that respond to the specific needs of our school community. For example, the school's Uniform and Grooming Procedure is reviewed annually and communicated to families four times per year. This procedure is inclusive and considers gender diversity and disability, offering multiple uniform options and allowing for individual adjustments through a Principal-approved process.

Recognising the cultural diversity within our school community, Holy Cross School ensures that policies, procedures, and key safeguarding information are accessible to all families. At significant whole-school events, such as Parent Information Nights, Spanish subtitles are incorporated into presentations to support understanding. Where required, key communications are also translated into Spanish or Portuguese by class teachers to ensure families can engage meaningfully with safeguarding and school expectations.

Safety and safeguarding procedures are regularly reviewed and reinforced with staff and students on a termly basis. The school's Be Rules are revisited at least once per term, with explicit discussion around safety, learning, and respect. Clear role-specific Volunteer Role Cards are available on the school website and at the school office, outlining expectations and requirements for various volunteer roles. At the commencement of each year, staff and families are informed of volunteer guidelines and compliance requirements. To strengthen consistency, the school will provide the start-of-year volunteer induction presentation to new volunteers who join throughout the year.

The Principal actively monitors compliance with safeguarding, wellbeing, and risk management requirements through the Power BI tool. In collaboration with the Risk and Compliance Officer, the Principal regularly reviews the Blue Card Register, online portal, and third-party training records to ensure all staff and volunteers remain current with mandatory compliance requirements. These checks occur multiple times each term, supporting ongoing accountability and continuous improvement in safeguarding practice.

<sup>10</sup> Alignment with National Catholic Safeguarding Standards (NCSS): Standard 10 Policies And Procedures Support The Safety Of Children And Adults | Working with Children (Risk Management and Screening) Regulation 2020 (Qld) s 2 (3-6) | Education (Accreditation of Non-State Schools) Regulation 2017 (Qld)

