

Holy Cross Primary School is a Catholic learning community educating and transforming lives through the message of the Cross for the life of the world.

Holy Cross is

A Catholic School

We live the Catholic story, tradition and teachings
We live our faith through liturgy, ritual and outreach
We live the values taught by Jesus

A Place of Diversity

We value the intrinsic worth of each individual
We provide a climate of challenge, risk taking and support
We monitor the well-being of all

A Place of Learners and Learning

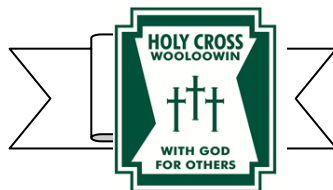
We create diverse opportunities for all to learn
We are engaged in learning
We are proud of what we achieve

A Belonging Community

We share and hold this common vision
We are welcoming, safe and caring
We have a happy and contented community

A place where quality relationships abound

We value the self-worth of all members
We strive to improve and grow relationships
We create a supportive and safe environment



HOLY CROSS SCHOOL

**40 MORRIS ST
WOOLLOOWIN**

SCHOOL CONTACT DETAILS

Phone: 38572443

Fax: 33579532

Email: pwoolloowin@bne.catholic.edu.au

SCHOOL CONTACT PERSONNEL

Principal

Paul Drewniak

APRE

Michelle McClafferty

Support Teacher (IE)

Maureen Walsh

Guidance Counsellor

Cecily Cairns



**Brisbane Catholic Education
Centre**

Enrolment Application

and

Support Procedures

for

Students requiring Significant

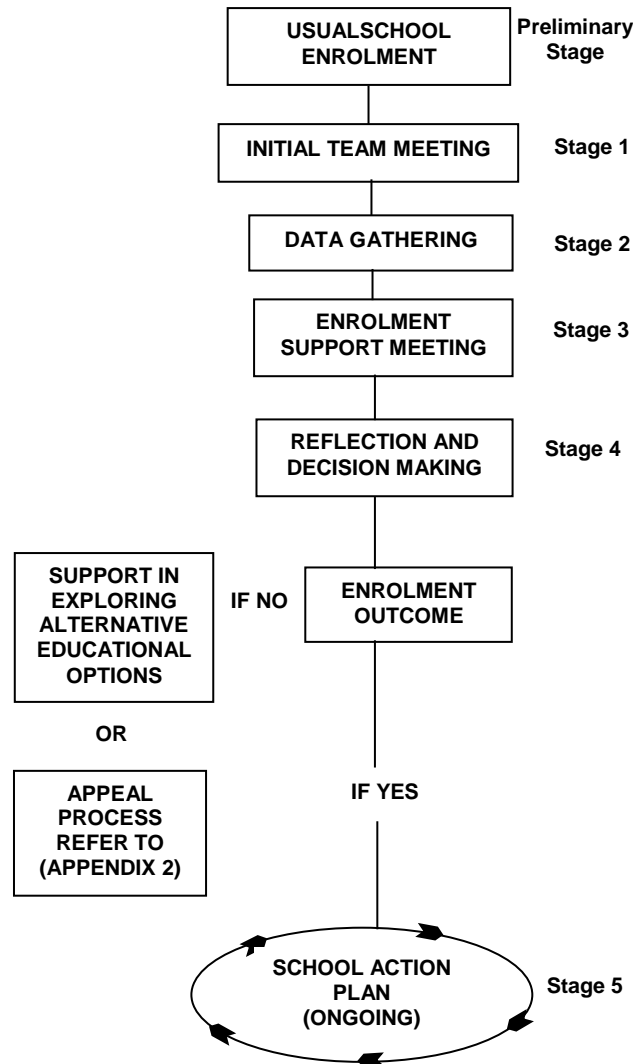
Educational Adjustments

Introduction and Rationale

The Enrolment Application and Support Procedures for Students requiring Significant Educational Adjustments operates within the Policy – Students with Disabilities for Brisbane Catholic Education schools. This policy statement, consistent with the Vision Statement and Strategic Renewal Framework 2012-2016, reflects the ongoing commitment of Brisbane Catholic Education to the incorporation of inclusive practices in schools and is guided by the principles of justice as reflected with Church, education and legal areas. The enrolment of a student requiring significant educational adjustments is the concern of the whole school community within the church. The process seeks to reveal and clarify the characteristics of the learner, and to assess the relevant adjustments for accessing the learning and the implications of these for the school, the family and the student. A partnership approach is foundational to this process and leads to an appropriate response to the student's educational needs. The enrolment application and support procedures are used when it is considered likely that significant educational adjustments will be needed to support a student's initial enrolment and/or for ongoing service provision.



ENROLMENT APPLICATION AND SUPPORT PROCEDURES For Students requiring Significant Educational Adjustments



Preliminary Stage

- Make Application for Enrolment



Stage 1 Parent Meeting

- *Student Enrolment Team meeting preparation*
- *Partnership Formed*



Stage 2 Data Gathering

- *Observe/Collect Data*
- *Explore Needs*



Stage 3 Enrolment Support Meeting

- *Examine Implications*
- *Partnership Strengthened*



Stage 4 Reflection &

Decision Making

- *Principal Makes Decision*
- *Informs Relevant Others*



Stage 5 School Action Plan

- *Plan Action as Necessary*
- *Ongoing program monitoring & Review of adjustments*
- *Returning to Stage 2 (if necessary)*

